

BrickCover solves leakage problems in private homes, trade and industry

Used for impregnating of:

- sandstone
- bricks
- paving stones
- garage floors
- swimming pools
- Siporex blocks
- concrete
- facades
- plaster

Product description:

BrickCover is a non-toxic one-coat impregnation which seals mineral-based building materials. BrickCover does not change the colour or texture of the surface to which it is applied. It is colourless, gives a natural surface effect and is completely absorbed by the material when applied.

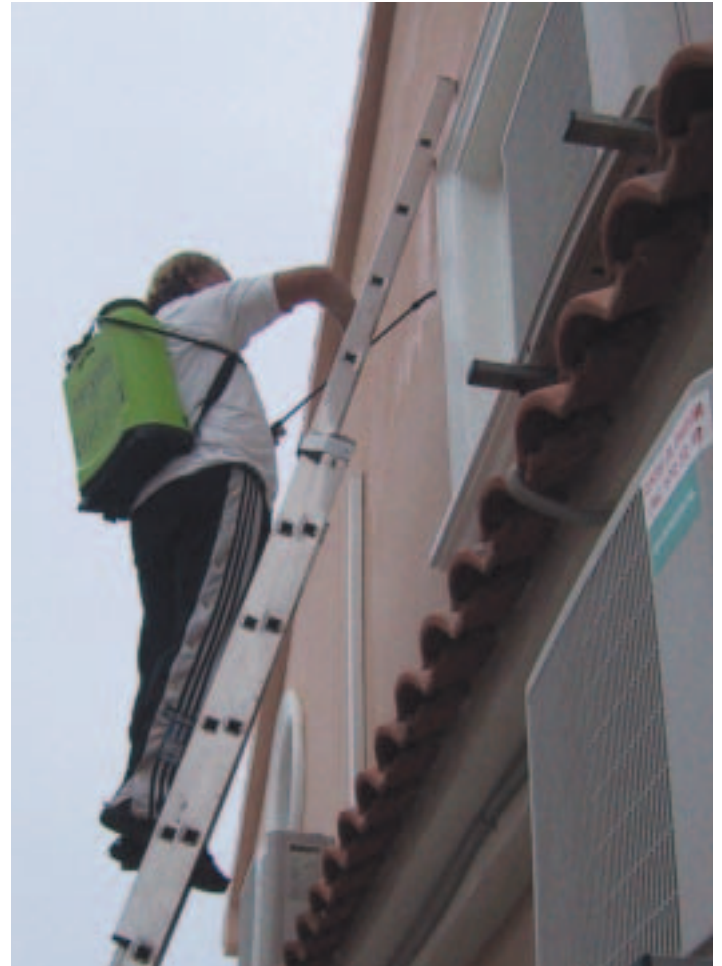
BrickCover resists moisture and prevents growth, algae etc. It counteracts erosion and dust. BrickCover is a water-soluble silicate containing a special catalyst (the same as in EverCrete) which allows the silicate to penetrate the material to which it is applied (25 mm in bricks measured by T.I., Copenhagen). Contains no hazardous solvents; its pH is stabilized at 11.2.

Please note:

Has a corrosive effect on glass, glazed surfaces and aluminium. If there is spillage, wash immediately with water. One coat only is needed. Does not fill cracks. The treatment should be repeated after a 10-year period.

Advantages:

- One layer is sufficient.
- Does not change colour or texture.
- Protects against penetration of grease, oil, acids and salts.
- Makes for easier removal of ice and snow.
- Makes cleaning easier.



User instructions:

- BrickCover works better on completely dry surfaces at temperatures above + 10°C.
- Paint and surface-treatment must be removed for effective BrickCover treatment.
- Untreated surfaces and new plaster needs no pre-treatment.
- For treatment of pure concrete, we recommend EverCrete first, then BrickCover after 3 days.
- BrickCover does not fill visible cracks.
- Cracks must be opened and filled with suitable mortar before applying BrickCover
- Freezing does not harm BrickCover, but please thaw completely before use.
- Try a small test sample in a corner.
- Shake container well before use.

BrickCover

1918



Application:

1. BrickCover should not be diluted.
2. Apply with brush, roller or sprayer (garden sprayer is OK).
3. Clean soiled areas with water. Dry carefully before applying BrickCover.
4. Apply evenly, moisten all areas.
5. Vertical surfaces: Start from the bottom and continue upwards.
6. One coat only. Reaction time is 4-5 hours after application. Light pedestrian traffic is allowed after 30 minutes.
7. Tools to be cleaned with water.

Consumption:

Consumption: 2.5-5.0 m² per litre.

May act as a skin irritant.

Wash skin with soap and water.

Non-toxic (see MSDS data sheet)

We recommend use of protective gloves and goggles.

Other products in this series:

EverCrete :

Penetrating impregnation and membrane curer for concrete.

Binds dust and seals against water (from inside also).
Water-based.

Talk to your distributor for further information.

Producer:

Ecobeton Int. as
P.Box 42 Røa
0701 Oslo Norway
Tel: +47 67 15 52 22
www.ecobeton.com



Distributor: